

SWFSA Construction Status 04-04-2020

Although the new gate is installed, it is only for construction use at this time. It will frequently be open during the day, but should be locked at night. Please continue to use the old gate.

Numerous loads of rock continue to arrive, courtesy of Cape Coral's ongoing construction.

(These images unavoidably have distortion, due to the wide-angle lens.)

The color coding is the same as previous photos, and on the SWFSA Construction Layout diagram.

Green= New Bays (as numbered) and new berms. Purple= approximate slab/shooting locations.

Yellow=roadway (& parking). **The new gate:**



New Bay 3, looking East; the dotted line is the end berm, details in the next two photos.



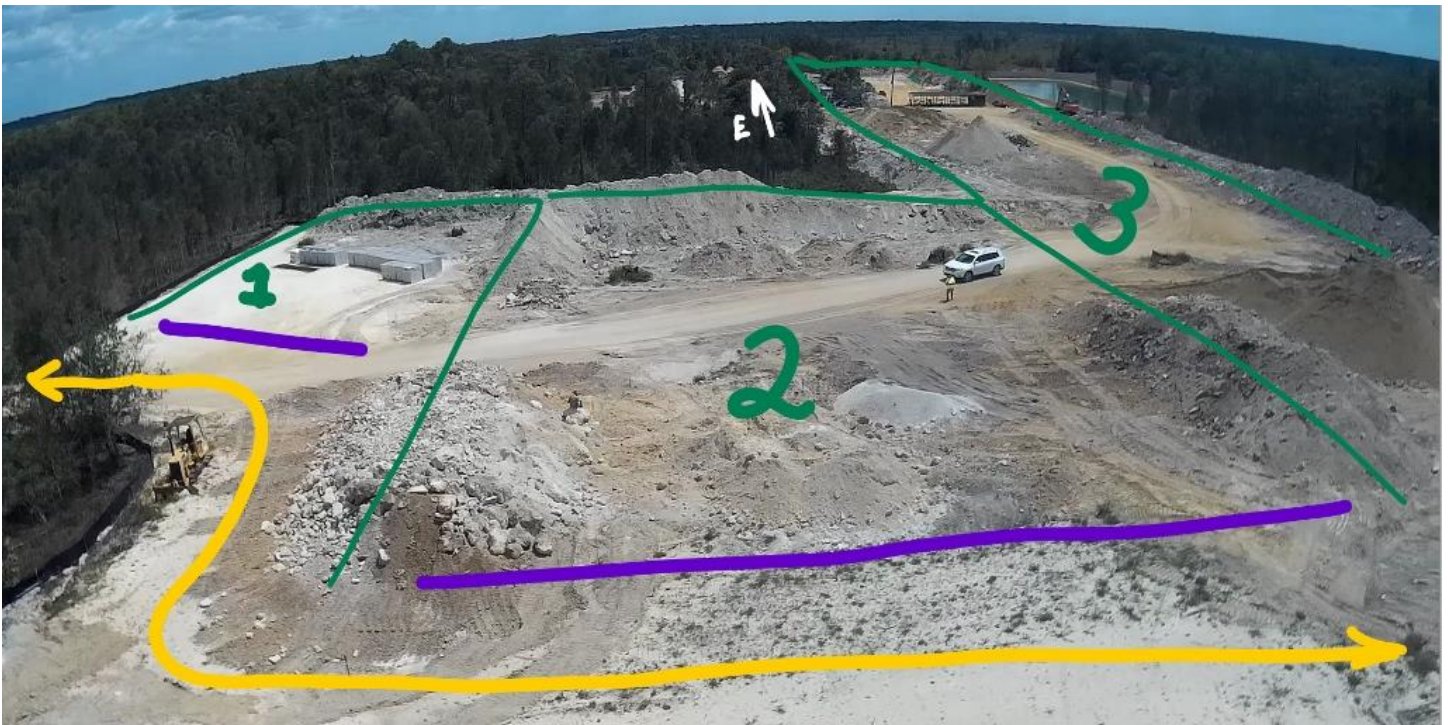
Considerable rock has been deposited for the New Bay 3 end berm (total height will be 28 ft.)
The new berm is the combined length of both the existing Bay 1 and Bay 2 end berms.



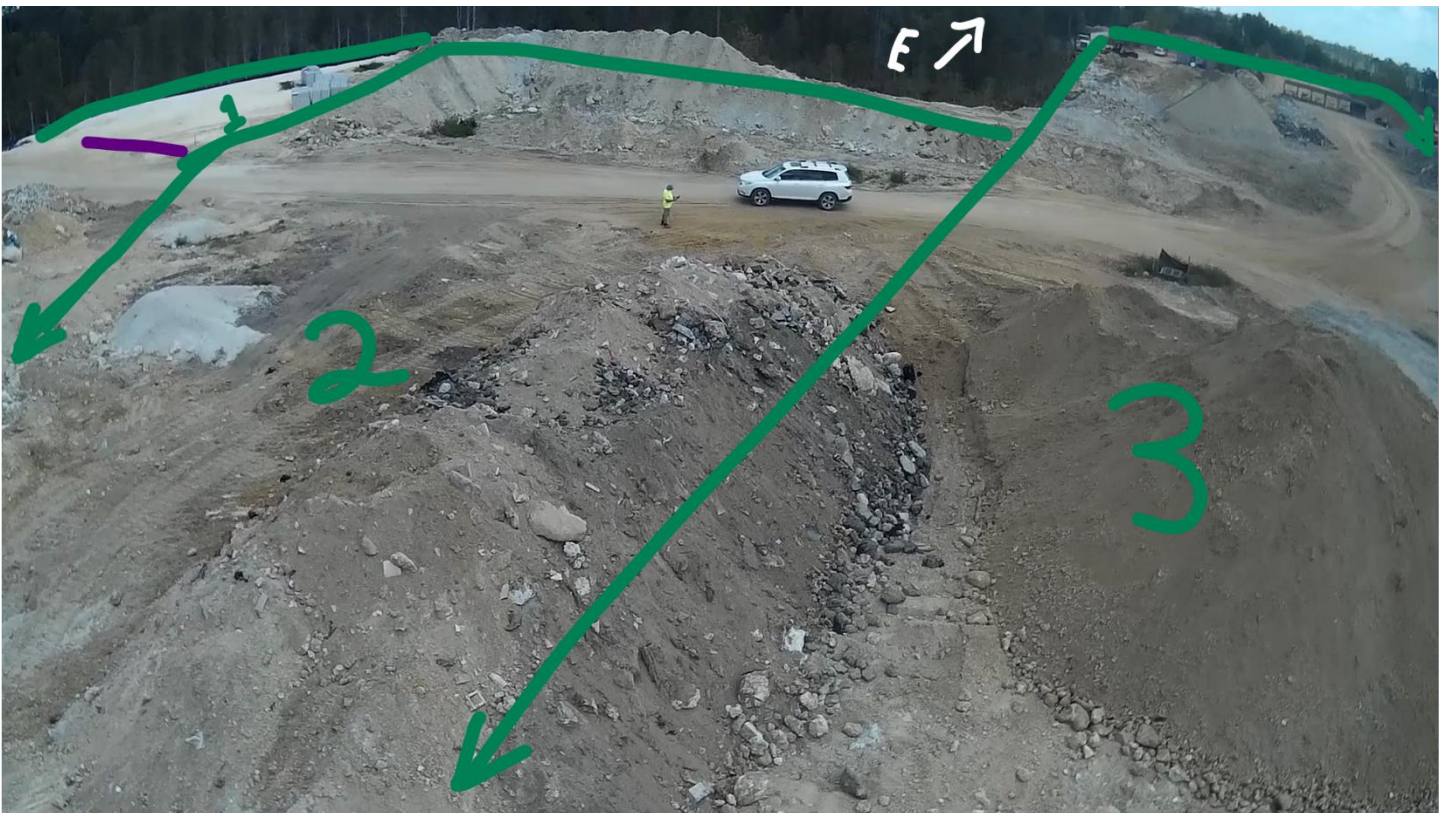
Bays 1 and 2, looking East. Large piles of rock, and dirt.



We are always shooting to the East.



Lower altitude view; you can better appreciate how high the dirt mounds are.



Bay 4 and 5, looking SSW. Notice the many drainage grates (the "black squares" are the surrounding silt barriers). These drain into the new pond, as in the next photos.



We are always shooting to the East (towards the left on these images).



The large drainage pipes (remember them?) are now buried under the fill dirt, and drain into the new pond.
Looking North:



Looking South:

